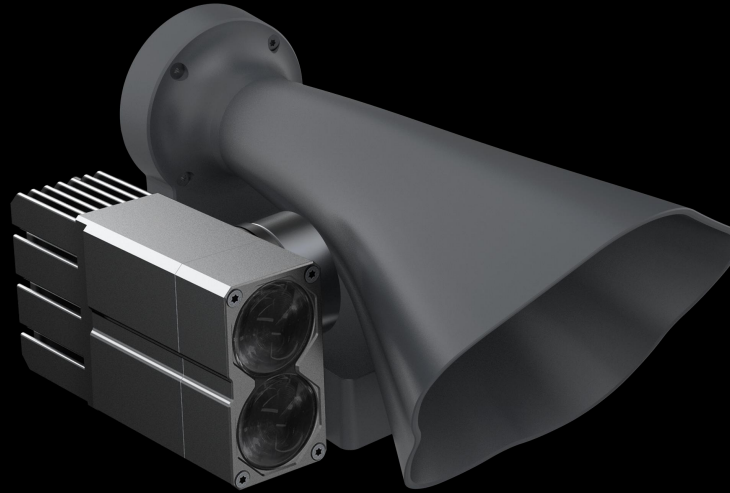


# LP 12 Searchlight & broadcasting system



## Designed for Brand-new DJI M30

Pushing the industrial limits of lightweight design with only 270g

Streamline Aesthetic design  
Effectively reduce wind resistance

## Quick mount and dismount for easy use

Effective sound distance 200m

Gimbal Synchronization pitching

Effective illumination distance 100m

## Day and night patrol

Mountain / forest search and rescue

Warning and dispersal



MODEL	LP12			
Electrical interface	DJI OSDK			
Weight	270g ( without quick-release bracket) 283g (With quick-release bracket)			
Dimensions/mm	L162* W111*H75			
Searchlight power/W	Regular mode: 30W Ultra bright mode&Flashing mode: 40W			
Broadcasting power/W	15			
Supply voltage/V	24			
Luminous flux/lm	2000±3%			
Searchlight FOV/°	13			
Illumination distance/m	150	130	100	50
Spot diameter/m	34	29.6	22.8	11.4
Illuminated area/m <sup>2</sup>	917	688	407	102
Central illuminance/Lux	1.7	2.5	4.5	20
Controlled rotation range of the gimbal	Pitch		-120°~+45°	
Maximum sound pressure/dB	120			
Effective broadcast distance/m	200m@74dB; 350M@69dB			
Broadcast method	Live broadcasting Upload the recording Audio file playing Text to speech (supports multi-language) Background sound			
Audio format	mp3/wav/m4a/flac/aac			
APP support	CZZN Pop-up window/DJI Pilot			
Operating temperature	-15℃~+40℃			